

**Critical Strategies for  
Empowering 21st  
Century Teachers**  
Andrew K. Miller  
ASCD National Faculty

---

---

---

---

---

---

---

---

- [By the end of this webinar we will:](#)
- Review models for coaching and capacity building
- Uncover protocols that empower teachers
- Share strategies for effective professional development and PLCs

---

---

---

---

---

---

---

---

**“Begin with the End  
In Mind”**  
*Professional Development must model the work we  
want our teachers and students to implement!*

---

---

---

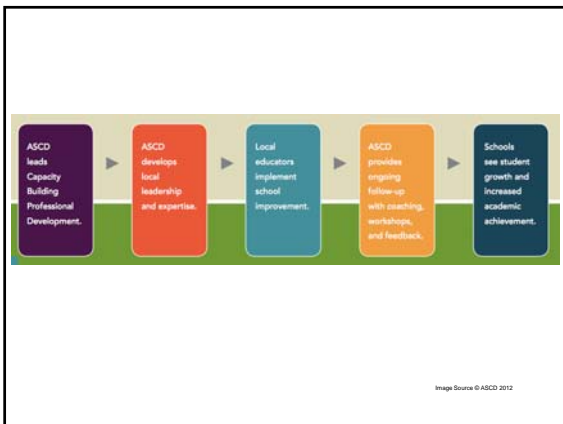
---

---

---

---

---




---

---

---

---

---

---

---

---

**Teacher-Leader Model**  
 ASCD Faculty members provide workshops, coaching, and mentoring to support the development of teacher leaders who can build capacity within the school or district. Teacher leaders learn how to plan, lead, and implement effective school-based professional development.

**School Improvement Team Model**  
 ASCD Faculty members guide teacher leaders and school-level administrators in developing plans and strategies for school improvement, while school leaders receive coaching in effective instructional leadership.

**Instructional Coach Model**  
 ASCD Faculty members provide ongoing professional learning for instructional coaches centered on identifying and nurturing teachers' individual strengths and helping them reach new levels of professional practice.



Image Source © ASCD 2012 ASCD Logo

---

---

---

---

---

---

---

---

**Blended Learning for Teacher Empowerment**

**PD Face2Face** Get the expertise you need to come to your site for a one- or multi-day professional development experience. PD Face2Face is inclusive, so we handle all of the administrative details for you.

**PD ONLINE** Go online anytime to access more than 60 self-paced online courses to satisfy the professional development needs of educators at all levels.

**PD INFOCUS** Use our online library of videos and other resources to organize and implement teacher professional development focused on effective, research-based teaching practices.

Image Source © ASCD 2012

---

---

---

---

---

---

---

---

## Technology-Based PLN

- Twitter Hashtags
- Ongoing Conversations
- Resource Sharing
- Twitter "Chats"

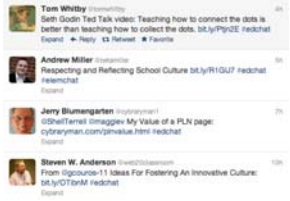


Image Source © Andrew Miller 2012 "Twitter Screenshot"

---

---

---

---

---

---

---

---

## Technology-Based PLN

- Webinars
- Voice and Choice
- Anytime! Anywhere!
- Demand Deliverables
- Competency-Based
- Digital "Parking Lot"

---

---

---

---

---

---

---

---

## Poll: Do you use the PLC model?

- Yes, it is apart of our school culture.
- Somewhat, we have it in name, but perhaps not in practice
- No, we do not use the PLC model.
- No, but we are curious about using it.

---

---

---

---

---

---

---

---

## Attributes of a PLC

1. Supportive and Shared Leadership,
2. Collective creativity,
3. Shared Values and Vision,
4. Supportive Conditions
5. Shared Personal Practice.



Source © Southwest Educational Development Laboratory 2012  
Image Source © Roseburg Public Schools 2012

---

---

---

---

---

---

---

---

## What is a CFG?

"The purpose of a CFG is to provide professional development that translates into improved student learning. This adult learning is accomplished through **formal**, ongoing interactions of small groups of staff that **participate voluntarily**. A trained CFG coach, who is often a member of the faculty, leads the CFG. These groups, if engaging and effective, increase student learning, contribute to the participants' professional growth, and strengthen the school and district's **capacity** to function as learning communities."

Source © National School Reform Faculty 2012

---

---

---

---

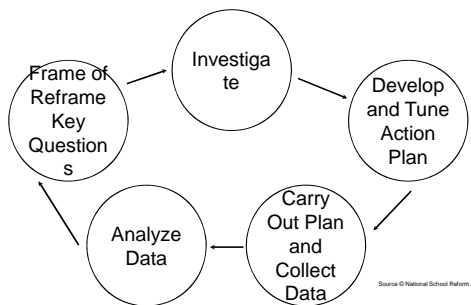
---

---

---

---

## The Cycle of Inquiry as PD



Source © National School Reform Faculty 2012

---

---

---

---

---

---

---

---

**Frame or Reframe Key Questions**

Brainstorm Protocols  
Essential Questions on  
Focused Topic/ Issue  
Teacher Created

"How do we improve our algebra scores?"  
"How do we engage students with a variety of instructional strategies?"

Source © National School Reform Faculty 2012

---

---

---

---

---

---

---

---

**Investigate Literature or Field Experiences**

Culture Building Protocols  
Text-Based Protocols  
"Final Word"

Text or Experience Targeted to the question/ issue  
Voice and Choice in Text or Experience

Classroom Visits  
Instructional Rounds  
CFGs/PLCs

Source © National School Reform Faculty 2012

---

---

---

---

---

---

---

---

**Develop and Tune Action Plan**

Culture Building Protocols  
Student Work Protocols  
Goals and Measurement/  
Data

Tuning Protocols  
Accountability  
CFGs/ PLCs

Source © National School Reform Faculty 2012

---

---

---

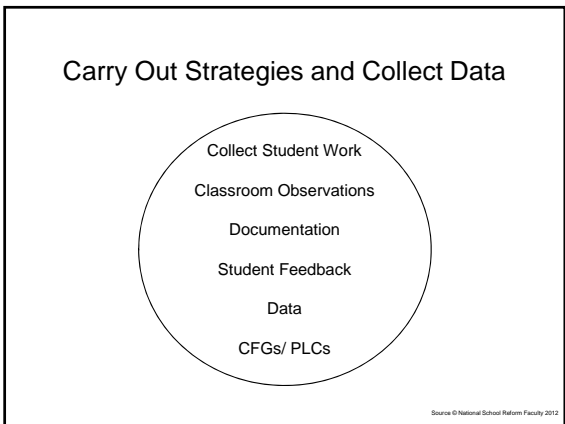
---

---

---

---

---



---

---

---

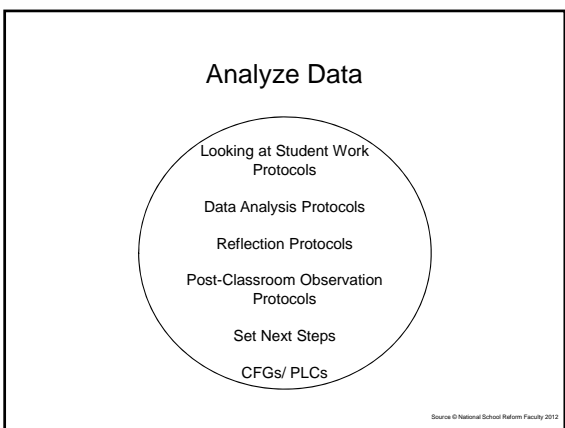
---

---

---

---

---



---

---

---

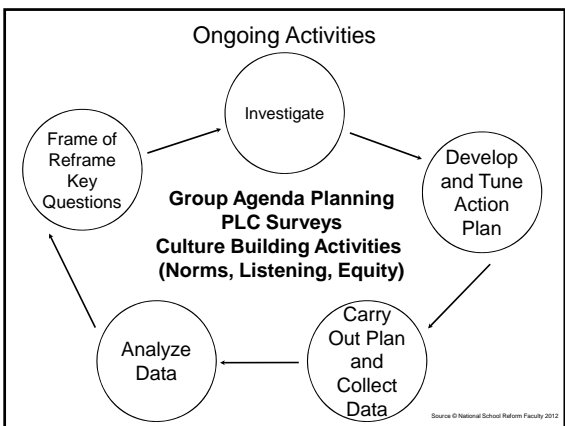
---

---

---

---

---



---

---

---

---

---

---

---

---

## Closing Remarks

- Focus on targeted protocols
- Know your model for Capacity Building
- Use Technology
- Model and Practice
- Turn the power over to teachers!

---

---

---

---

---

---

---

## Empowerment through:

1. Inquiry
2. Technology
3. Protocols

---

---

---

---

---

---

---



[andrew@andrewkmiller.com](mailto:andrew@andrewkmiller.com)



[twitter.com/betamiller](https://twitter.com/betamiller)



[www.andrewkmiller.com](http://www.andrewkmiller.com)

---

---

---

---

---

---

---